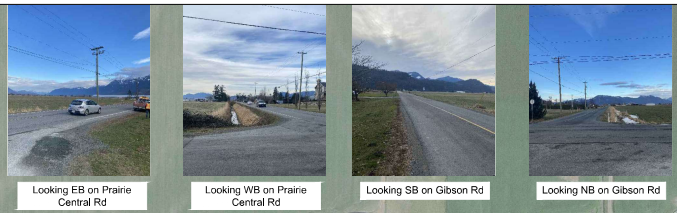


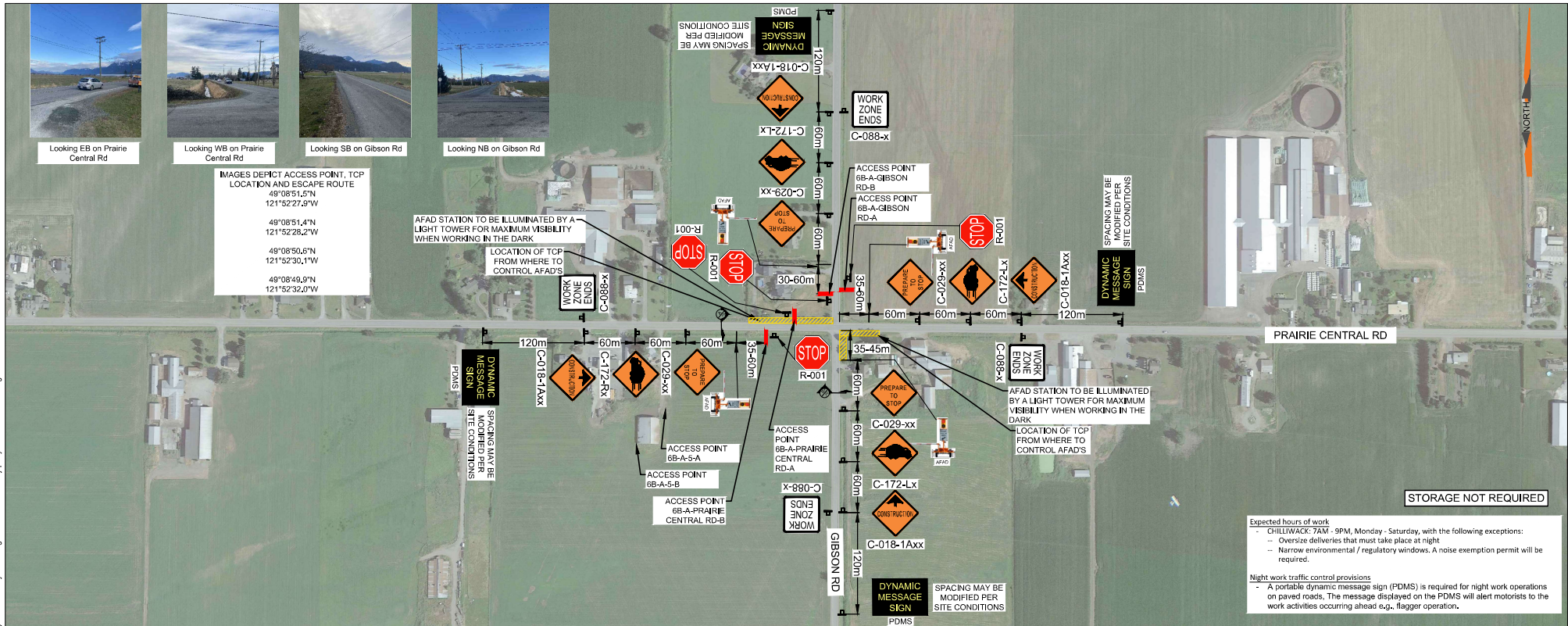


PROJECT: 10/18/2023 10:41:01 AM  
 DRAWN BY: WATT CONSULTING GROUP LTD.  
 CHECKED BY: WATT CONSULTING GROUP LTD.  
 DATE: 10/18/2023 10:41:01 AM  
 PLOTTED BY: WATT CONSULTING GROUP LTD.



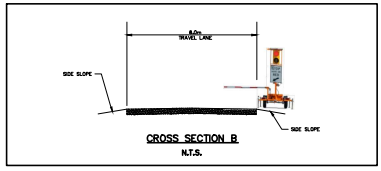
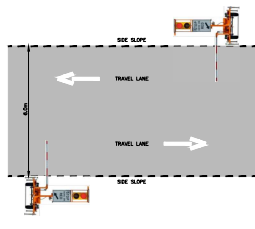
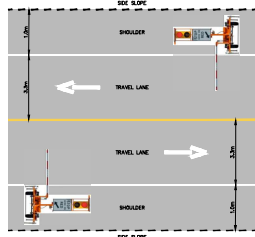
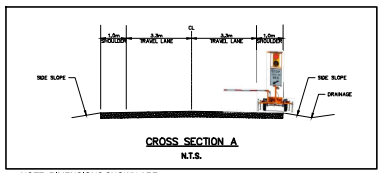
IMAGES DEPICT ACCESS POINT, TCP  
 LOCATION AND ESCAPE ROUTE  
 49°08'51.5"N  
 121°52'27.5"W  
 49°08'51.4"N  
 121°52'28.2"W  
 49°08'50.6"N  
 121°52'30.1"W  
 49°08'49.9"N  
 121°52'32.0"W

AFAD STATION TO BE ILLUMINATED BY A  
 LIGHT TOWER FOR MAXIMUM VISIBILITY  
 WHEN WORKING IN THE DARK  
 LOCATION OF TCP  
 FROM WHERE TO  
 CONTROL AFAD'S



**STORAGE NOT REQUIRED**

**Expected hours of work**  
 - CHILLIWACK: 7AM - 5PM, Monday - Saturday, with the following exceptions:  
 - Oversize deliveries that must take place at night  
 - Narrow environmental / regulatory windows. A noise exemption permit will be required.  
**Night work traffic control provisions**  
 - A portable dynamic message sign (PDMS) is required for night work operations on paved roads. The message displayed on the PDMS will alert motorists to the work activities occurring ahead e.g., flagger operation.



**LEGEND:**

- SIGN MARKER
- AUTOMATED FLAGGER ASSISTANCE DEVICE (AFAD)
- TCP CONTROL LOCATION
- ACCESS (6B-A-GIBSON RD-A&B) AND (6B-A-PRAIRIE CENTRAL RD-A&B)

**PERMIT TO PRACTICE**  
**WATT CONSULTING GROUP LTD**  
 SIGNATURE \_\_\_\_\_  
 DATE \_\_\_\_\_  
**PERMIT NUMBER: 1001432**  
**ENGINEERS & GEOSCIENTISTS**  
**BRITISH COLUMBIA**

SEAL:

REVISIONS	
0	ISSUED FOR IMPLEMENTATION JAN 18-23
1	ISSUED FOR IMPLEMENTATION JAN 23-23
2	ISSUED FOR IMPLEMENTATION JAN 27-23
3	
4	
5	
6	
7	
8	

DESIGNED: CK	DRAWN: CK	CHECKED: KM	APRVD: KM
DESIGN VEHICLE: 60 km/h		DESIGN SPEED: 60 km/h	
PROJECT NO: 3431.B01		DRAWING NO: 6B-A-GIBSON/PRAIRIE-A&B_P2	
DATE: JAN 18, 2023		REVISION: 2	

**TITLE: TRAFFIC CONTROL LAYOUT**  
**AP 6B-A-GIBSON RD/PRAIRIE CENTRAL RD-A&B**  
**BPLP TMEP SPREAD 6B**

Calgary, Edmonton, Lloydminster,  
 Okanagan, Vancouver, Victoria  
**WATT CONSULTING GROUP**  
 CONSULTING GROUP

















PROJECT: W-10447 (Plan 01) - TCEP Spread 6B - Design (SLAT) (WAG-6B-CL-0203) (CENTRAL RD-A, B, C, D, E, F, G, H, I, J, K, L, M, N, O, P, Q, R, S, T, U, V, W, X, Y, Z, AA, AB, AC, AD, AE, AF, AG, AH, AI, AJ, AK, AL, AM, AN, AO, AP, AQ, AR, AS, AT, AU, AV, AW, AX, AY, AZ, BA, BB, BC, BD, BE, BF, BG, BH, BI, BJ, BK, BL, BM, BN, BO, BP, BQ, BR, BS, BT, BU, BV, BW, BX, BY, BZ, CA, CB, CC, CD, CE, CF, CG, CH, CI, CJ, CK, CL, CM, CN, CO, CP, CQ, CR, CS, CT, CU, CV, CW, CX, CY, CZ, DA, DB, DC, DD, DE, DF, DG, DH, DI, DJ, DK, DL, DM, DN, DO, DP, DQ, DR, DS, DT, DU, DV, DW, DX, DY, DZ, EA, EB, EC, ED, EE, EF, EG, EH, EI, EJ, EK, EL, EM, EN, EO, EP, EQ, ER, ES, ET, EU, EV, EW, EX, EY, EZ, FA, FB, FC, FD, FE, FF, FG, FH, FI, FJ, FK, FL, FM, FN, FO, FP, FQ, FR, FS, FT, FU, FV, FW, FX, FY, FZ, GA, GB, GC, GD, GE, GF, GG, GH, GI, GJ, GK, GL, GM, GN, GO, GP, GQ, GR, GS, GT, GU, GV, GW, GX, GY, GZ, HA, HB, HC, HD, HE, HF, HG, HH, HI, HJ, HK, HL, HM, HN, HO, HP, HQ, HR, HS, HT, HU, HV, HW, HX, HY, HZ, IA, IB, IC, ID, IE, IF, IG, IH, II, IJ, IK, IL, IM, IN, IO, IP, IQ, IR, IS, IT, IU, IV, IW, IX, IY, IZ, JA, JB, JC, JD, JE, JF, JG, JH, JI, JJ, JK, JL, JM, JN, JO, JP, JQ, JR, JS, JT, JU, JV, JW, JX, JY, JZ, KA, KB, KC, KD, KE, KF, KG, KH, KI, KJ, KK, KL, KM, KN, KO, KP, KQ, KR, KS, KT, KU, KV, KW, KX, KY, KZ, LA, LB, LC, LD, LE, LF, LG, LH, LI, LJ, LK, LL, LM, LN, LO, LP, LQ, LR, LS, LT, LU, LV, LW, LX, LY, LZ, MA, MB, MC, MD, ME, MF, MG, MH, MI, MJ, MK, ML, MM, MN, MO, MP, MQ, MR, MS, MT, MU, MV, MW, MX, MY, MZ, NA, NB, NC, ND, NE, NF, NG, NH, NI, NJ, NK, NL, NM, NO, NP, NQ, NR, NS, NT, NU, NV, NW, NX, NY, NZ, OA, OB, OC, OD, OE, OF, OG, OH, OI, OJ, OK, OL, OM, ON, OO, OP, OQ, OR, OS, OT, OU, OV, OW, OX, OY, OZ, PA, PB, PC, PD, PE, PF, PG, PH, PI, PJ, PK, PL, PM, PN, PO, PP, PQ, PR, PS, PT, PU, PV, PW, PX, PY, PZ, QA, QB, QC, QD, QE, QF, QG, QH, QI, QJ, QK, QL, QM, QN, QO, QP, QQ, QR, QS, QT, QU, QV, QW, QX, QY, QZ, RA, RB, RC, RD, RE, RF, RG, RH, RI, RJ, RK, RL, RM, RN, RO, RP, RQ, RR, RS, RT, RU, RV, RW, RX, RY, RZ, SA, SB, SC, SD, SE, SF, SG, SH, SI, SJ, SK, SL, SM, SN, SO, SP, SQ, SR, SS, ST, SU, SV, SW, SX, SY, SZ, TA, TB, TC, TD, TE, TF, TG, TH, TI, TJ, TK, TL, TM, TN, TO, TP, TQ, TR, TS, TT, TU, TV, TW, TX, TY, TZ, UA, UB, UC, UD, UE, UF, UG, UH, UI, UJ, UK, UL, UM, UN, UO, UP, UQ, UR, US, UT, UY, UV, UW, UX, UY, UZ, VA, VB, VC, VD, VE, VF, VG, VH, VI, VJ, VK, VL, VM, VN, VO, VP, VQ, VR, VS, VT, VU, VV, VW, VX, VY, VZ, WA, WB, WC, WD, WE, WF, WG, WH, WI, WJ, WK, WL, WM, WN, WO, WP, WQ, WR, WS, WT, WU, WV, WW, WX, WY, WZ, XA, XB, XC, XD, XE, XF, XG, XH, XI, XJ, XK, XL, XM, XN, XO, XP, XQ, XR, XS, XT, XU, XV, XW, XX, XY, XZ, YA, YB, YC, YD, YE, YF, YG, YH, YI, YJ, YK, YL, YM, YN, YO, YP, YQ, YR, YS, YT, YU, YV, YW, YX, YY, YZ, ZA, ZB, ZC, ZD, ZE, ZF, ZG, ZH, ZI, ZJ, ZK, ZL, ZM, ZN, ZO, ZP, ZQ, ZR, ZS, ZT, ZU, ZV, ZW, ZX, ZY, ZZ.



IMAGES DEPICT ACCESS POINT, TCP  
 LOCATION AND ESCAPE ROUTE  
 49°08'51.5"N  
 121°52'27.5"W  
 49°08'51.4"N  
 121°52'28.2"W  
 49°08'50.6"N  
 121°52'30.1"W  
 49°08'49.9"N  
 121°52'32.0"W

AFAD STATION TO BE ILLUMINATED BY A  
 LIGHT TOWER FOR MAXIMUM VISIBILITY  
 WHEN WORKING IN THE DARK

LOCATION OF TCP FROM WHERE TO CONTROL AFAD'S

SPACING MAY BE  
 MODIFIED PER  
 SITE CONDITIONS

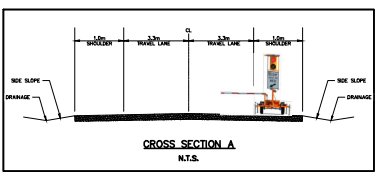
AFAD STATION TO BE ILLUMINATED BY A LIGHT TOWER FOR MAXIMUM  
 VISIBILITY WHEN WORKING IN THE DARK  
 LOCATION OF TCP FROM WHERE TO CONTROL AFAD'S

STORAGE NOT REQUIRED

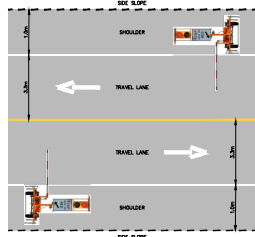
**Expected hours of work**  
 - CHILLIWACK: 7AM - 9PM, Monday - Saturday, with the following exceptions:  
 - Oversize deliveries that must take place at night  
 - Narrow environmental / regulatory windows. A noise exemption permit will be required.

**Night work traffic control provisions**  
 - A portable dynamic message sign (PDMS) is required for night work operations on paved roads. The message displayed on the PDMS will alert motorists to the work activities occurring ahead e.g., flagger operation.

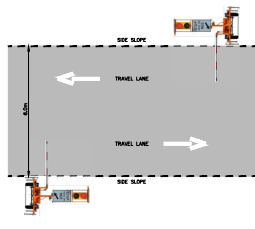
**Driveways within work zone**  
 - Driveways within the active work area (i.e. between AFADs) will have Type 1 barricades. These barricades will be controlled and maintained by a spotter situated in the work zone with radio communication to the AFAD operators. Vehicles exiting driveways will do so with the assistance of the spotter in a safe and controlled manner.



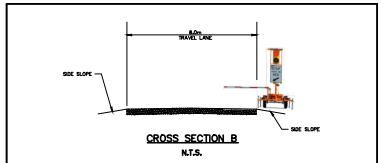
NOTE: DIMENSIONS SHOWN ARE SITE SPECIFIC



NOTE: DIMENSIONS SHOWN ON PLAN VIEWS ARE SITE SPECIFIC



NOTE: DIMENSIONS SHOWN ON PLAN VIEWS ARE SITE SPECIFIC



NOTE: DIMENSIONS SHOWN ARE SITE SPECIFIC

**LEGEND:**

- SIGN MARKER
- AUTOMATED FLAGGER ASSISTANCE DEVICE (AFAD)
- TCP CONTROL LOCATION
- ACCESS (6B-A-GIBSON RD-A&B) AND (6B-A-PRAIRIE CENTRAL RD-A&B)
- TYPE 1 BARRIER

**PERMIT TO PRACTICE**  
**WATT CONSULTING GROUP LTD**  
 SIGNATURE \_\_\_\_\_  
 DATE \_\_\_\_\_  
**PERMIT NUMBER: 1001432**  
**ENGINEERS & GEOSCIENTISTS**  
**BRITISH COLUMBIA**

SEAL:

REVISIONS	
0	ISSUED FOR IMPLEMENTATION JAN 24-23
1	ISSUED FOR IMPLEMENTATION JAN 27-23
2	
3	
4	
5	
6	
7	
8	

DESIGNED: CK	DRAWN: CK	CHECKED: KM	APRV: KM
DESIGN VEHICLE: 60 km/h		DESIGN SPEED: 60 km/h	
PROJECT NO: 3431.B01		DRAWING NO: 6B-A-GIBSON/PRAIRIE-A&B-SLAT_P5	
DATE: JAN 24, 2023		REVISION: 1	

**TITLE: TRAFFIC CONTROL LAYOUT**  
**AP 6B-A-GIBSON RD/PRAIRIE CENTRAL RD-A&B-SLAT**  
**BPLP TMEP SPREAD 6B**

**WATT** Consulting Group  
 Calgary, Edmonton, Lloydminster, Okanagan, Vancouver, Victoria  
[WATTCONSULTINGGROUP.COM](http://WATTCONSULTINGGROUP.COM)





